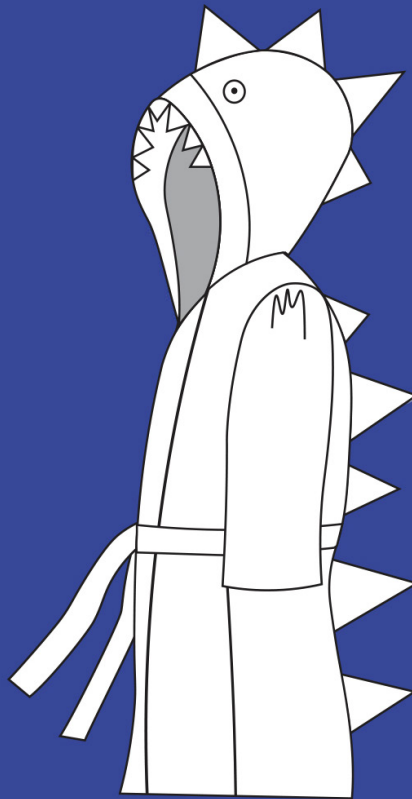


CHILD'S DRAGON DRESSING GOWN



PROJECT DESIGN ©
LOVE PRODUCTIONS 2023
THIS DESIGN IS PROTECTED
BY COPYRIGHT AND MUST NOT
BE MADE FOR RESALE.



Greetings dear sewing enthusiast,

Thank you for downloading our dragon dressing gown pattern.

This pattern is designed to fit an average five-year-old in order to give you the same challenge our lovely bee's had to tackle – and it certainly gave them a good test!

Best of luck with making this fun design – it will make a lovely gift for a little one in your life.

Sew long for now!

The Great British Sewing Bee

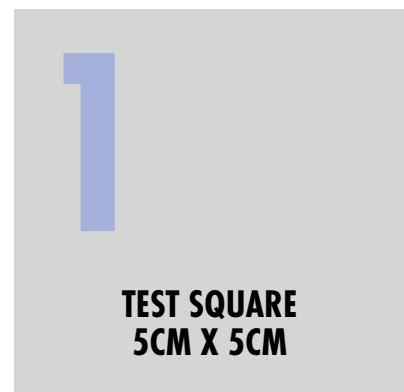
CHILD'S DRAGON DRESSING GOWN

PRINTING:

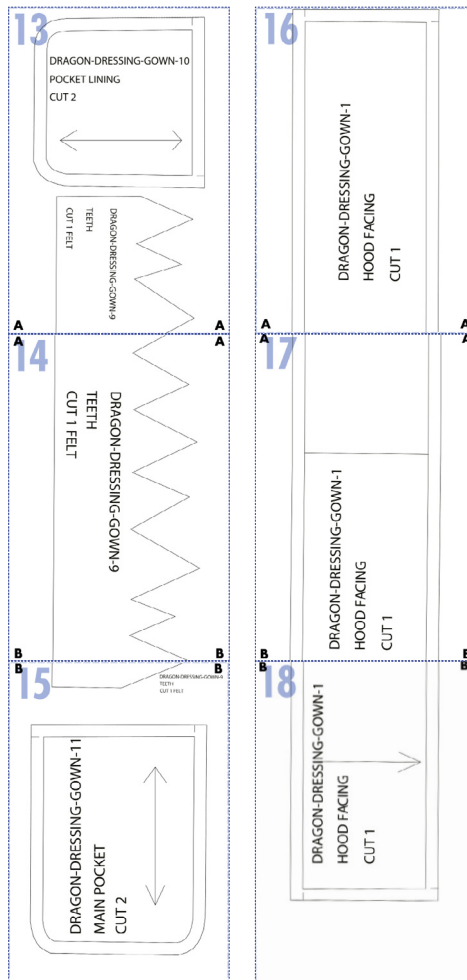
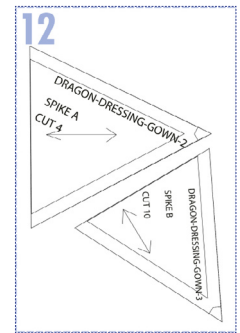
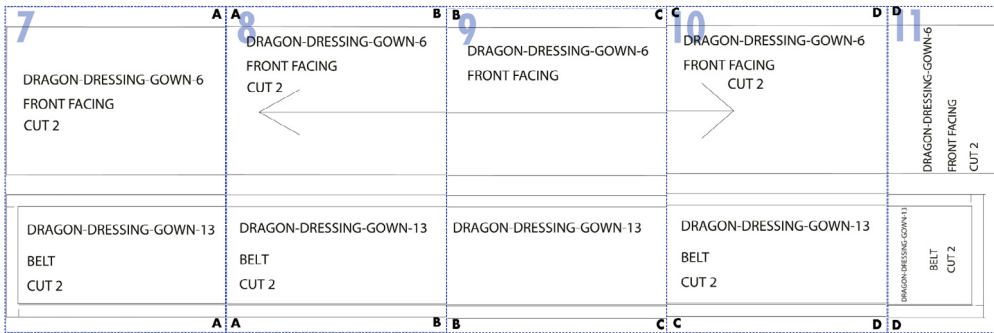
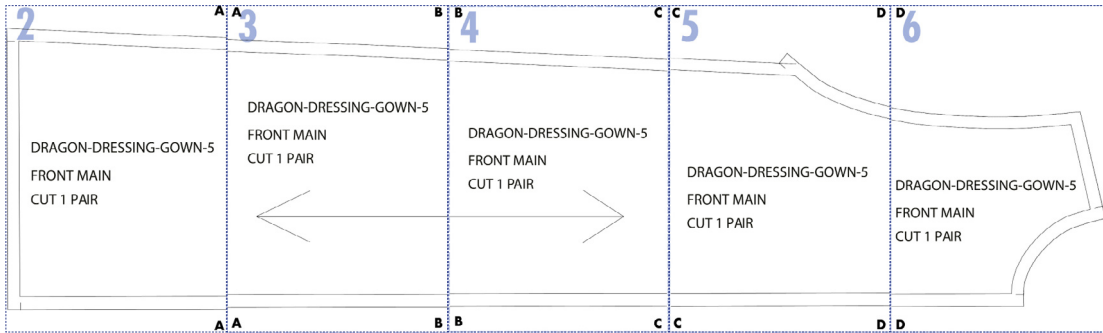
- ✗ In your print menu, under size options, please select ACTUAL SIZE, instead of FIT TO PAGE.
- ✗ Print on A4, single sided sheets.

INSTRUCTIONS:

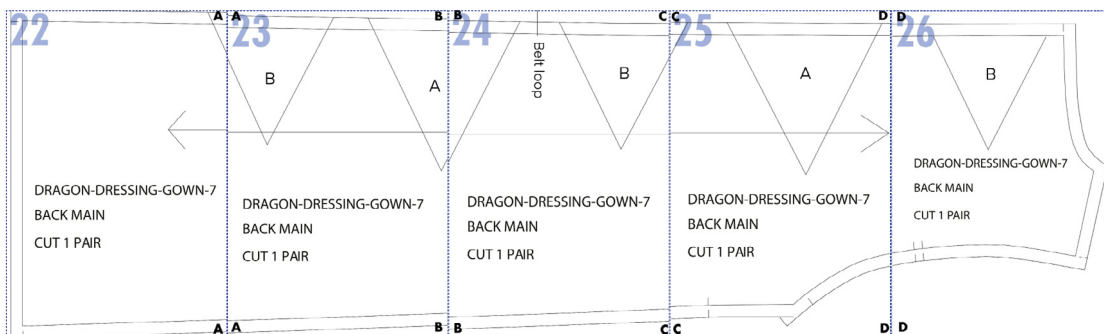
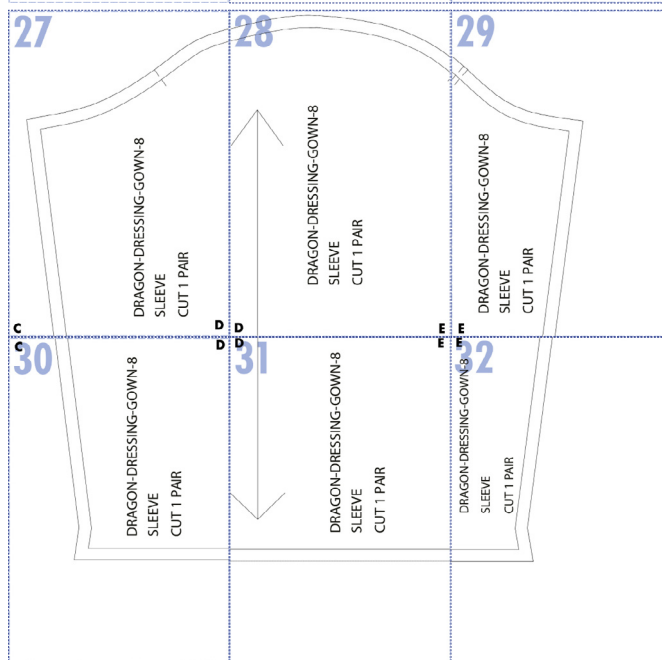
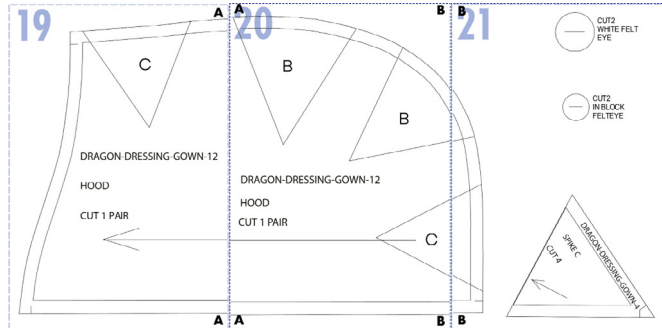
- ✗ Measure and cut out your test square to ensure your measurements are correct.
- ✗ Cut around each piece, using the stitched border as the edge.
- ✗ Lay out all the pieces and line up the corresponding letter. (Use the layplan as a reference).
- ✗ Stick the correct pieces together.



PDF PATTERN LAYPLAN



PDF PATTERN LAYPLAN



2

A

DRAGON-DRESSING-GOWN-5

**FRONT MAIN
CUT 1 PAIR**

A



A
3

B

DRAGON-DRESSING-GOWN-5

**FRONT MAIN
CUT 1 PAIR**



A

B



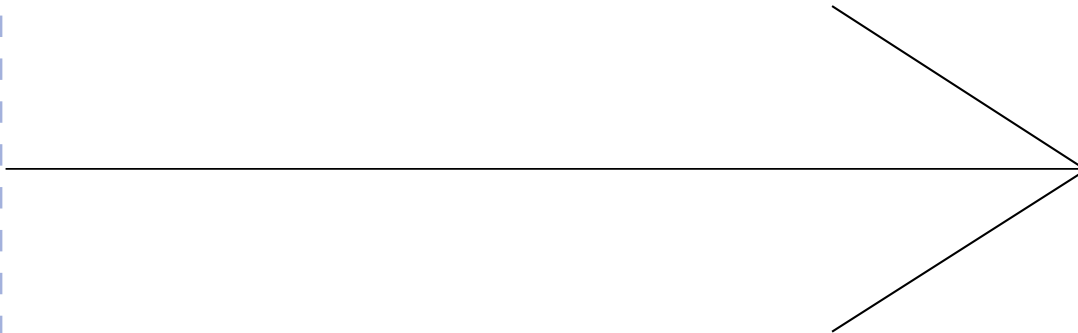
B

4

C

DRAGON-DRESSING-GOWN-5

**FRONT MAIN
CUT 1 PAIR**

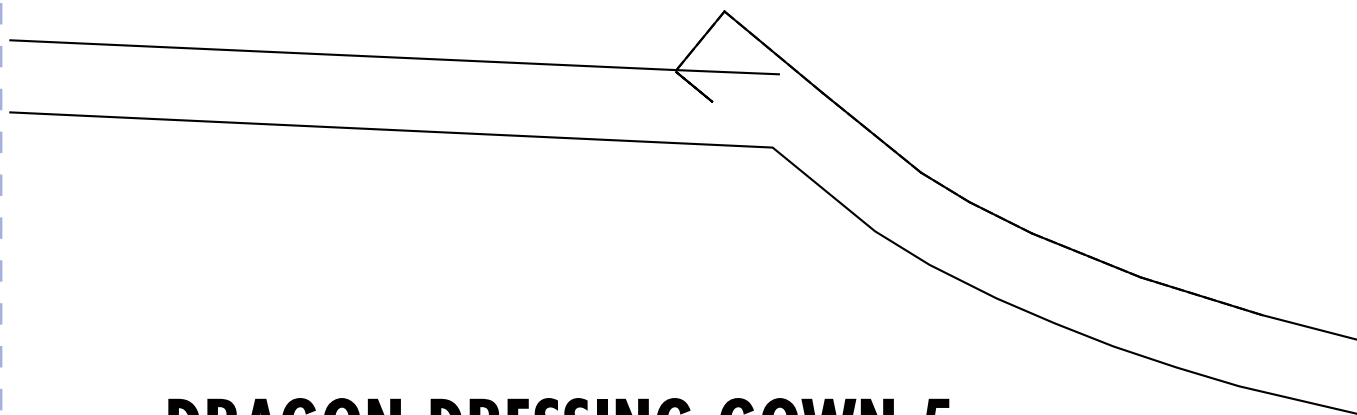


B

C

C
5

D



DRAGON-DRESSING-GOWN-5

**FRONT MAIN
CUT 1 PAIR**

C

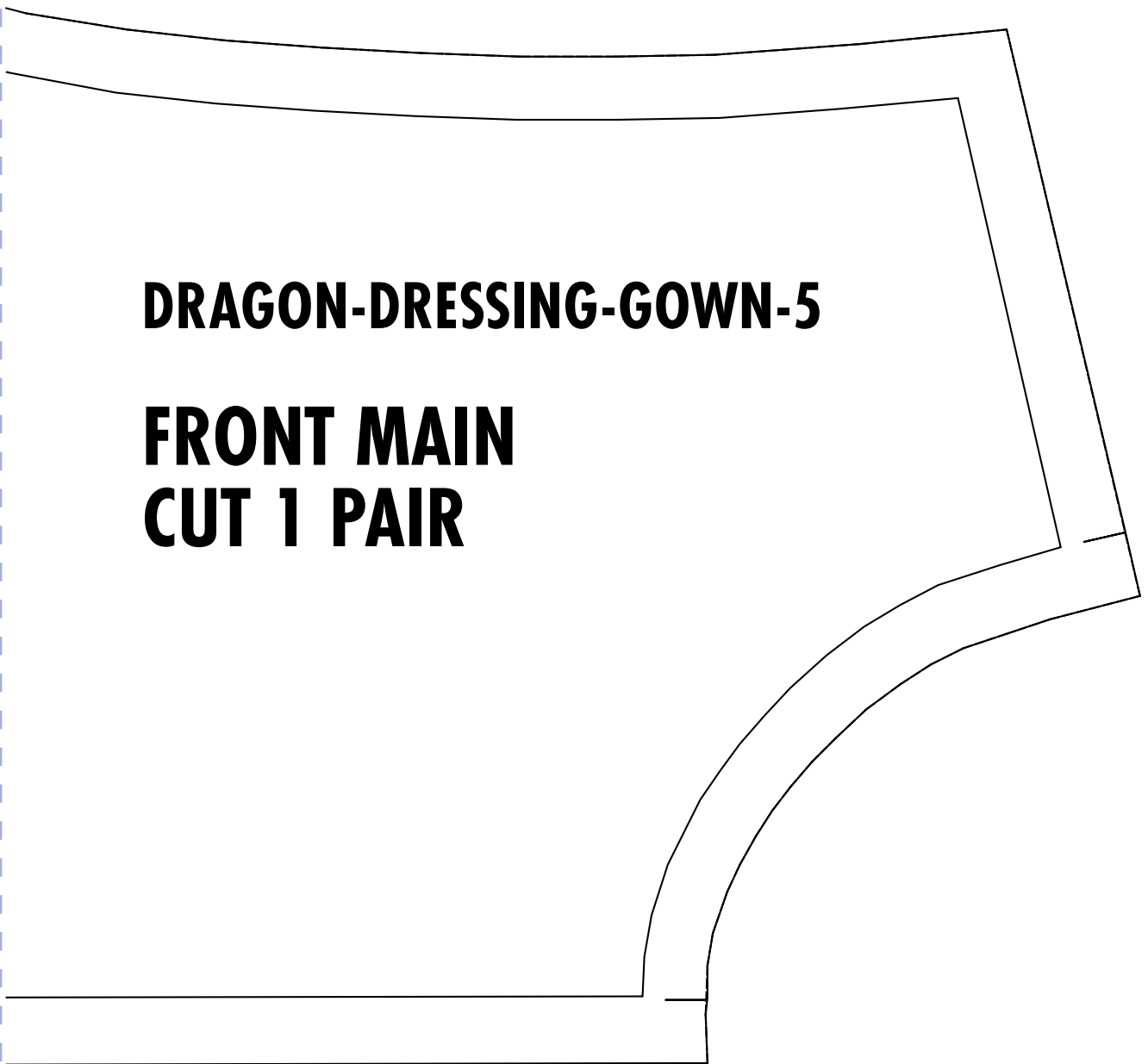
D



D
6

DRAGON-DRESSING-GOWN-5

**FRONT MAIN
CUT 1 PAIR**



D

7

A

DRAGON-DRESSING-GOWN-6

**FRONT FACING
CUT 2**

DRAGON-DRESSING-GOWN-13

**BELT
CUT 2**

A

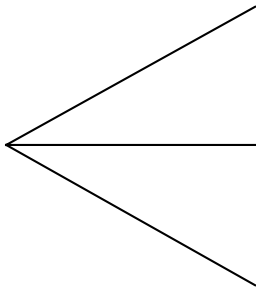


A
8

B

DRAGON-DRESSING-GOWN-6

**FRONT FACING
CUT 2**



DRAGON-DRESSING-GOWN-13

**BELT
CUT 2**

A

B

B

9

C

DRAGON-DRESSING-GOWN-6

FRONT FACING

DRAGON-DRESSING-GOWN-13

B

C



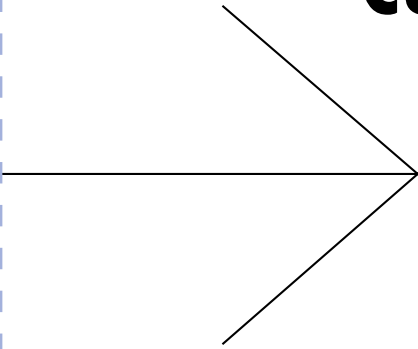
C

D

10

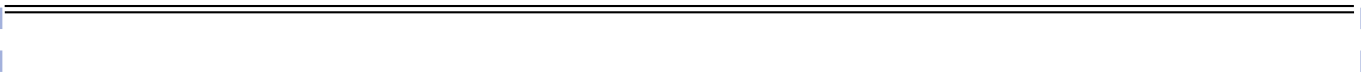
DRAGON-DRESSING-GOWN-6

**FRONT FACING
CUT 2**



DRAGON-DRESSING-GOWN-13

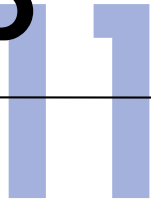
**BELT
CUT 2**



C

D

D



DRAGON-DRESSING-GOWN-6

**FRONT FACING
CUT 2**

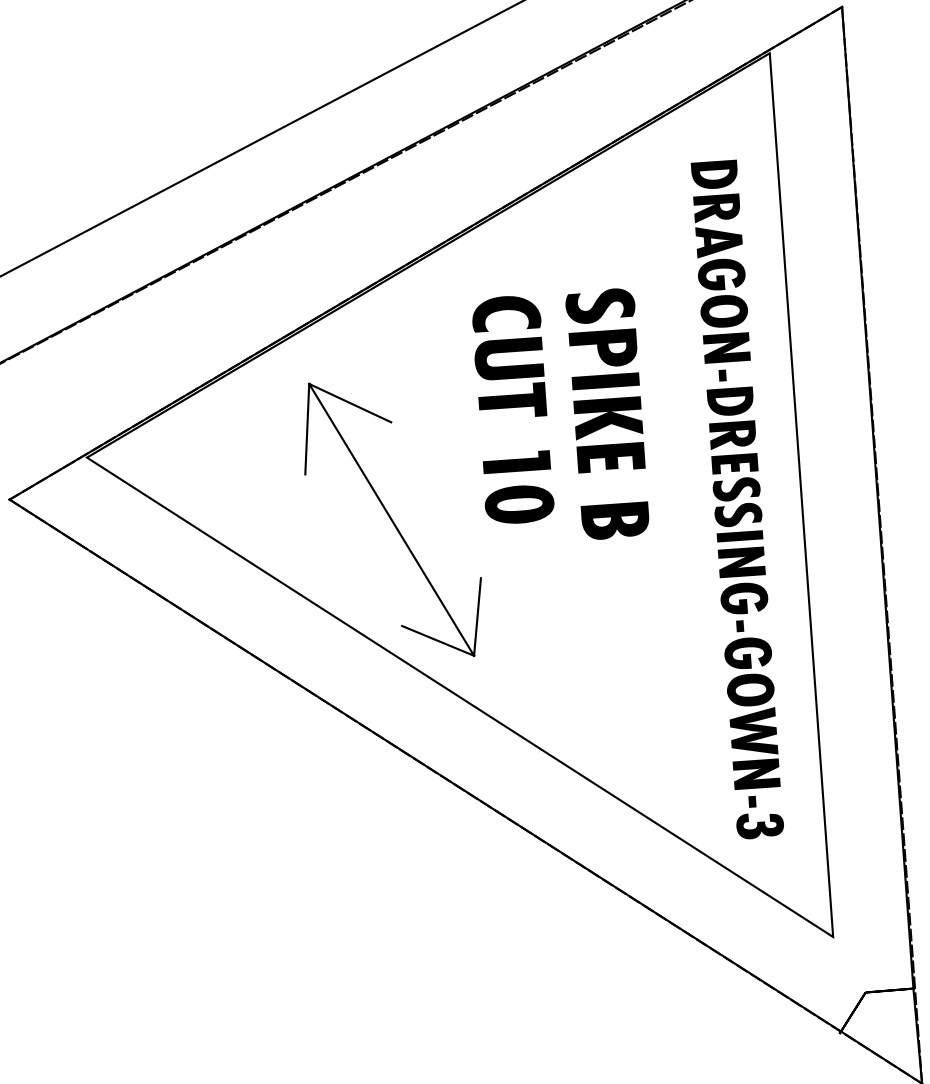
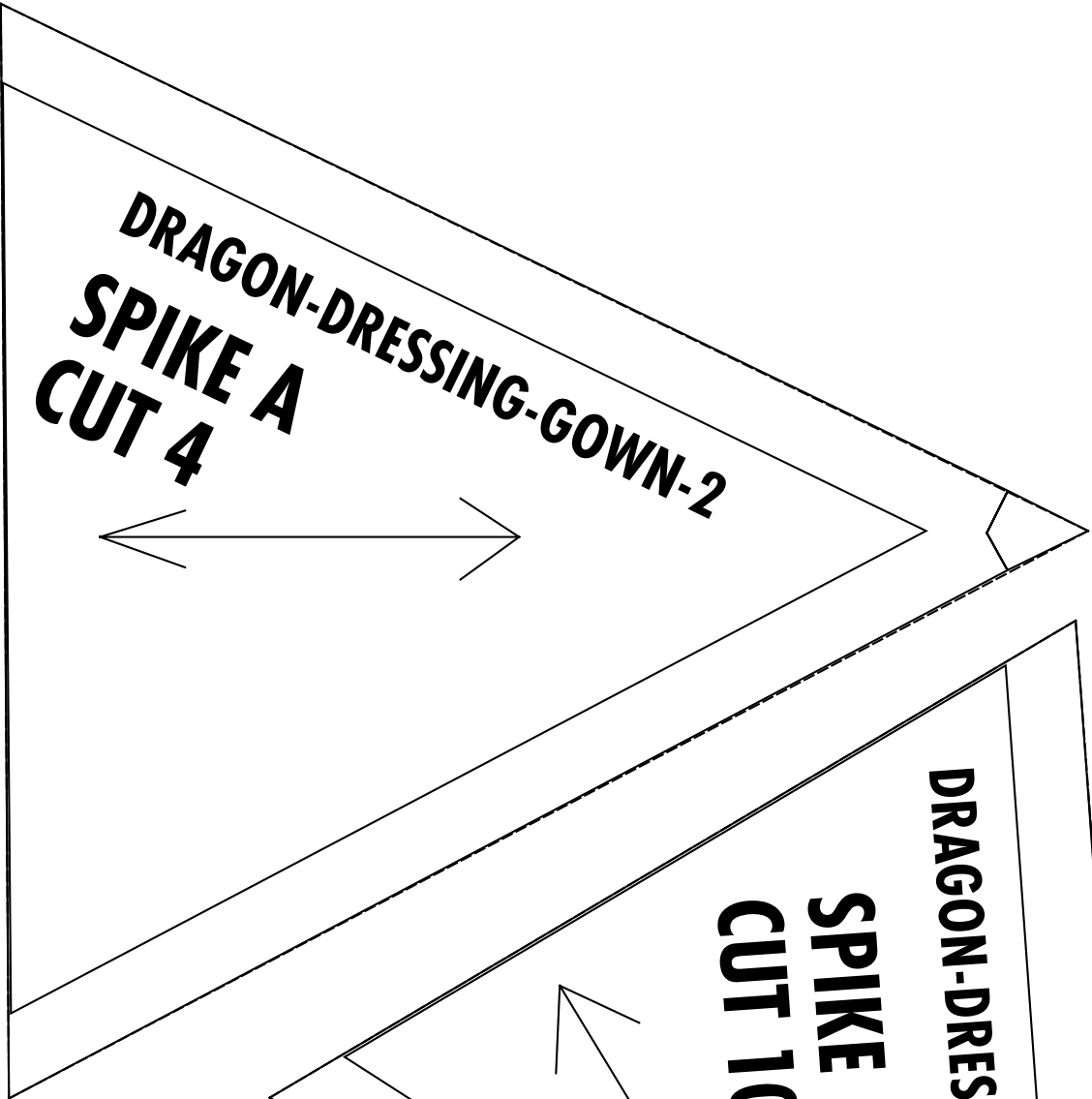
DRAGON-DRESSING-GOWN-13

**BELT
CUT 2**

D

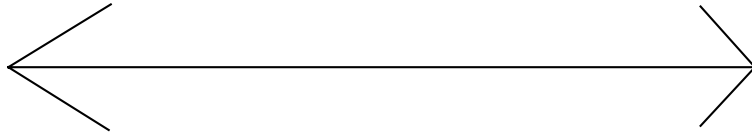


12

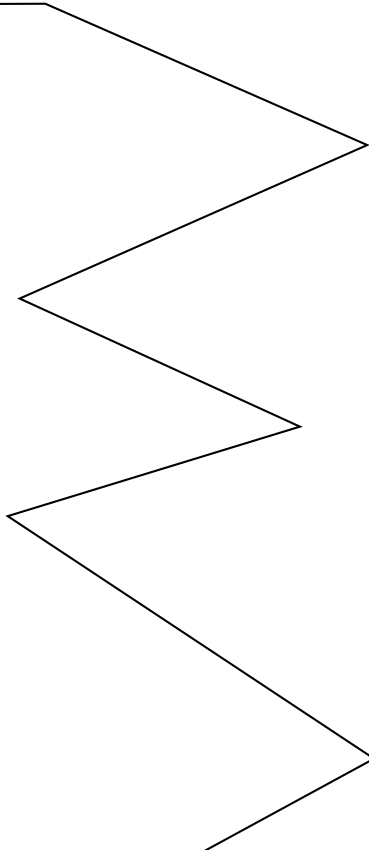


13

**DRAGON-DRESSING-GOWN-10
POCKET LINING
CUT 2**



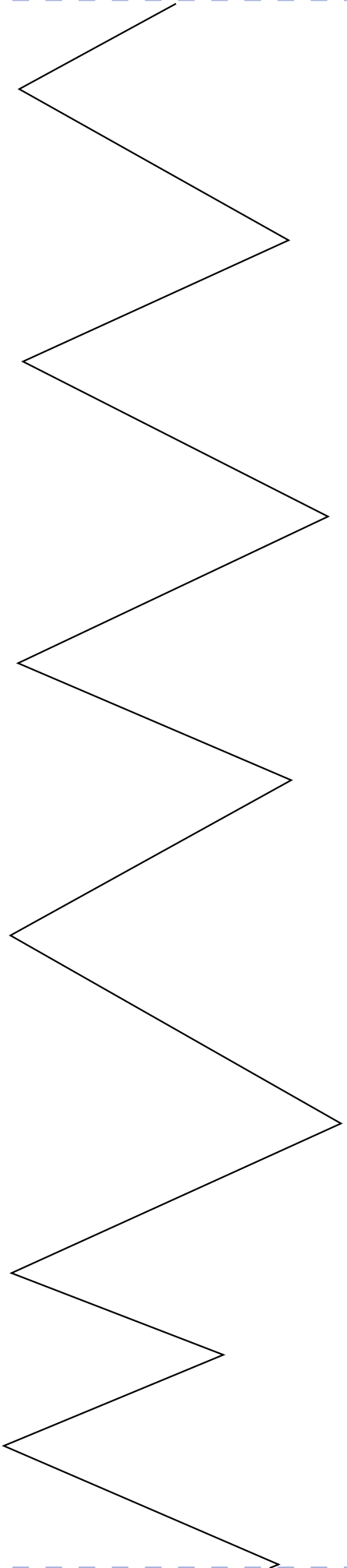
**DRAGON-DRESSING-GOWN-9
TEETH
CUT 1 FELT**



A

A

A



B

DRAGON-DRESSING-GOWN-9

TEETH

CUT 1 FELT

A

14

B



B
15

B

DRAGON-DRESSING-GOWN-9
TEETH
CUT 1 FELT

**DRAGON-DRESSING-GOWN-11
MAIN POCKET
CUT 2**



16

**DRAGON-DRESSING-GOWN-1
HOOD FACING
CUT 1**

A

A



A
17

A

DRAGON-DRESSING-GOWN-1
HOOD FACING
CUT 1

B

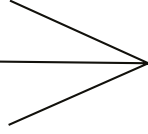
B



B

18

**DRAGON-DRESSING-GOWN-1
HOOD FACING
CUT 1**



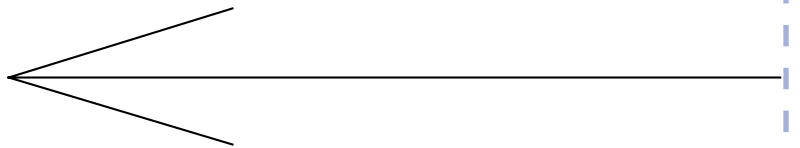
B

19

A

C

**DRAGON-DRESSING-GOWN-12
HOOD
CUT 1 PAIR**



A

A

B

20

B

B

DRAGON-DRESSING-GOWN-12

**HOOD
CUT 1 PAIR**

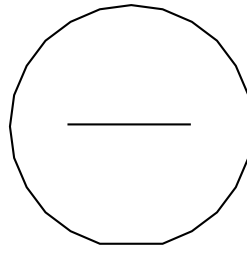
C

A

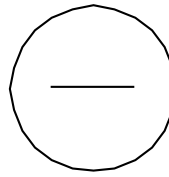
B



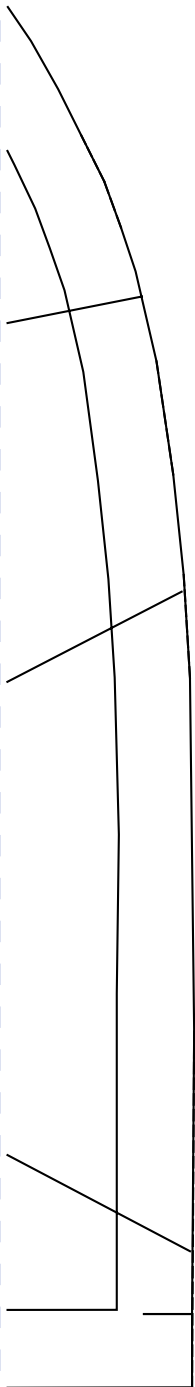
B 21



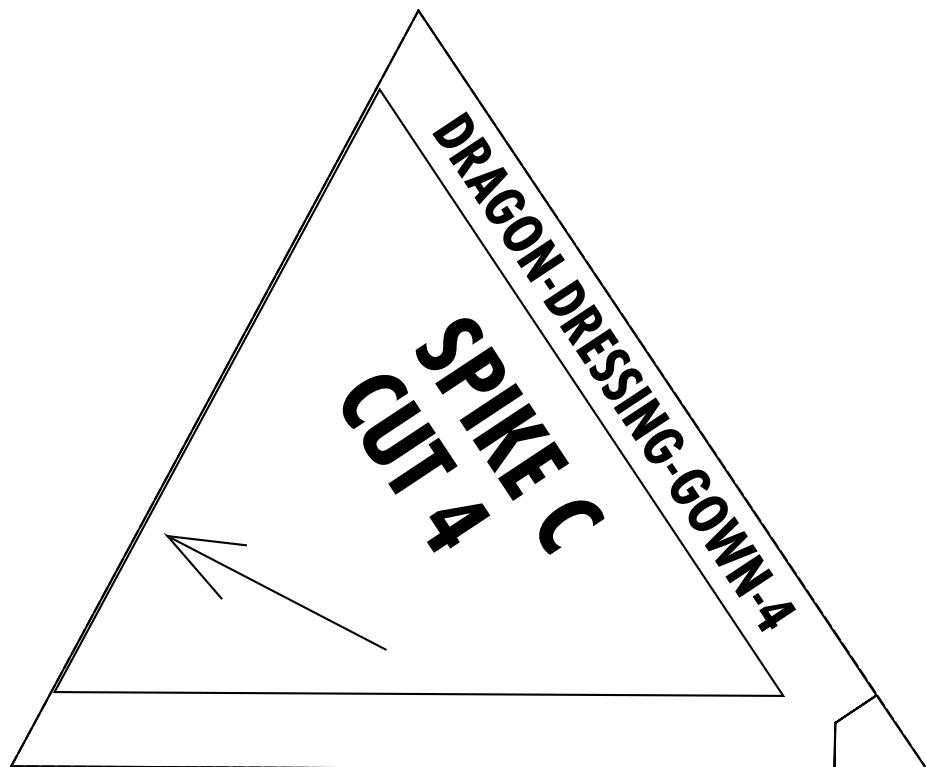
**CUT 2
WHITE FELT
EYE**



**CUT 2
IN BLOCK
FELT EYE**

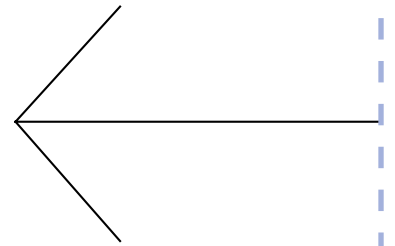


B



22

A



DRAGON-DRESSING-GOWN-7

**BACK MAIN
CUT 1 PAIR**

A



A
23

B

B

A

DRAGON-DRESSING-GOWN-7

**BACK MAIN
CUT 1 PAIR**

A

B



B
24

C

BELT LOOP

B

DRAGON-DRESSING-GOWN-7

**BACK MAIN
CUT 1 PAIR**

B

C



C

D

25

A

DRAGON-DRESSING-GOWN-7

**BACK MAIN
CUT 1 PAIR**

C

D



D

26

B

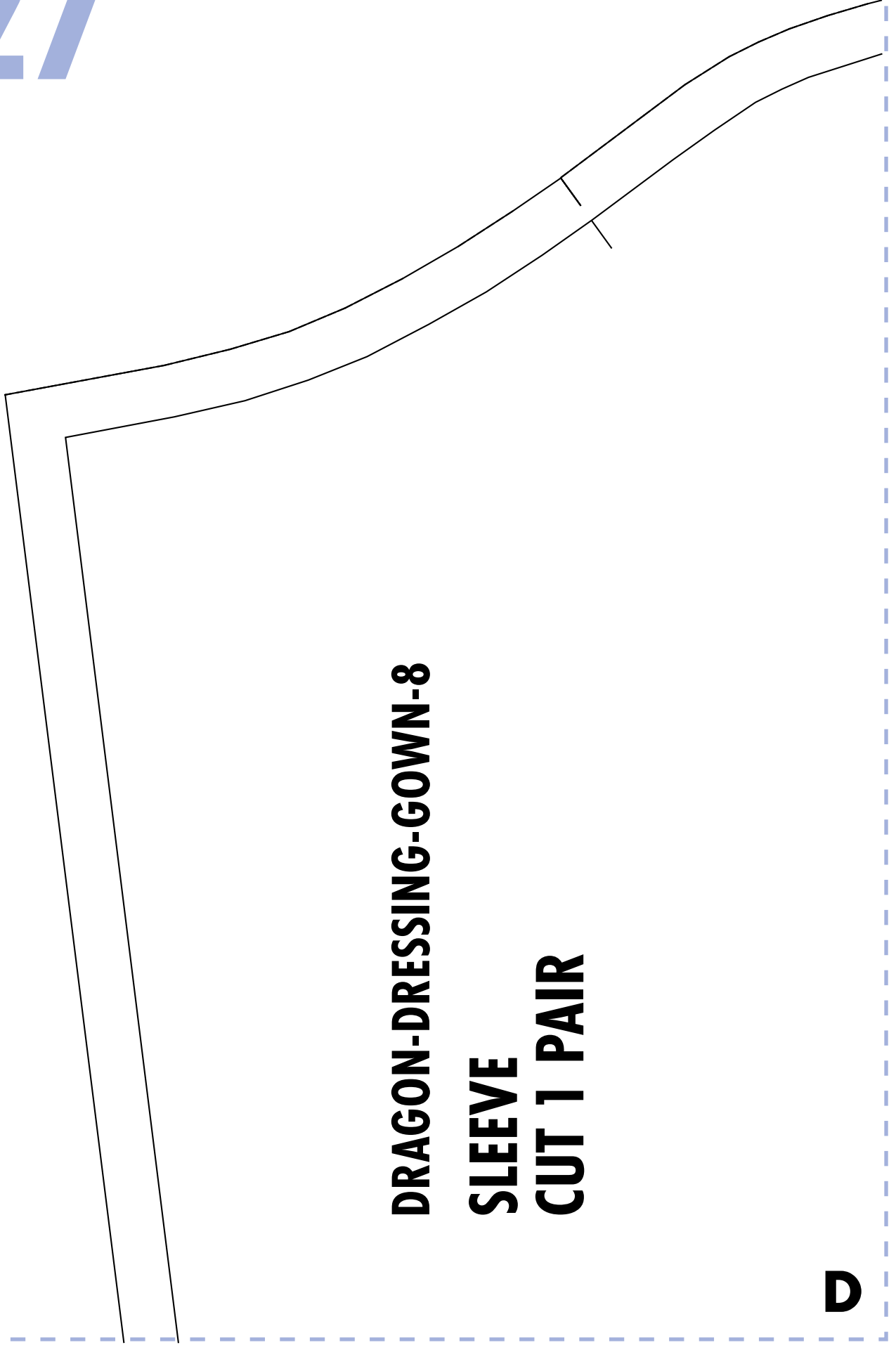
DRAGON-DRESSING-GOWN-7

**BACK MAIN
CUT 1 PAIR**

D



27



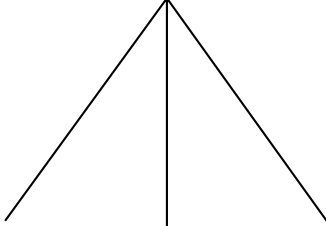
DRAGON-DRESSING-GOWN-8
SLEEVE
CUT 1 PAIR

C

D



28



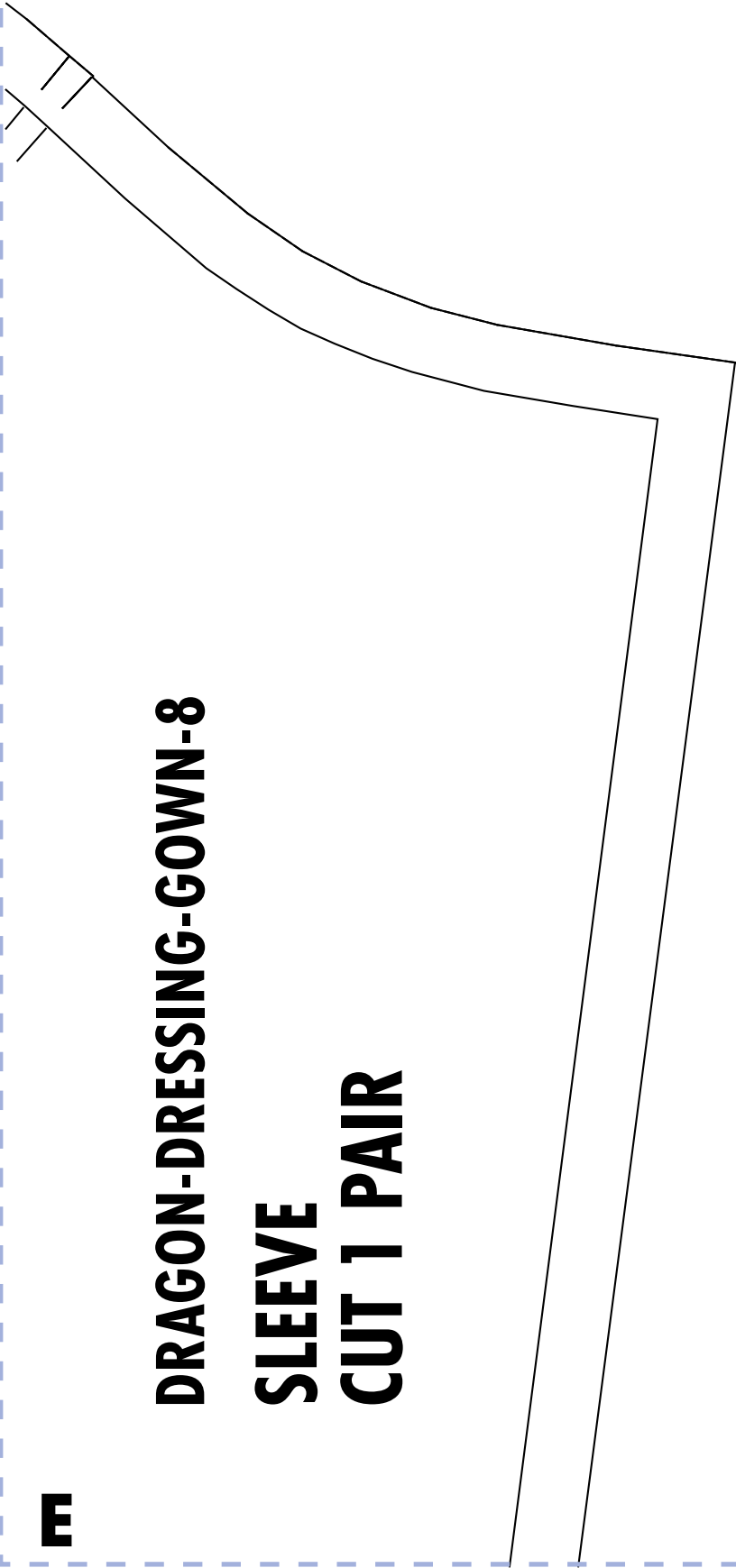
**DRAGON-DRESSING-GOWN-8
SLEEVE
CUT 1 PAIR**

D

E



29



F

DRAGON-DRESSING-GOWN-8

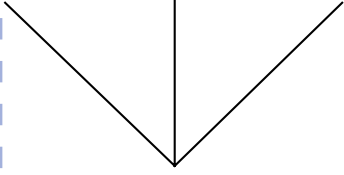
**SLEEVE
CUT 1 PAIR**

30

D

**DRAGON-DRESSING-GOWN-8
SLEEVE
CUT 1 PAIR**

D
31



DRAGON-DRESSING-GOWN-8
SLEEVE
CUT 1 PAIR

E

F
32

DRAGON-DRESSING-GOWN-8

**SLEEVE
CUT 1 PAIR**

